

Sweat-Shirt Ladies - À capuche, coton/polyester



#HOODIE/women - WW 04W #HOODIE/WOMEN

Composition: 80% pre-shrunk ringspun cotton (investing in better cotton), 20% recycled polyester RCS certified - H. Mid Grey, H. Navy, H. Asphalt, H. Red, H. Dark Green, H. Royal Blue & H. Purple: 60% pre-shrunk ringspun cotton, 40% polyester - Heather Grey: 92% pre-shrunk ringspun cotton, 8% viscose

Poids: 280

Pièces par carton: 20

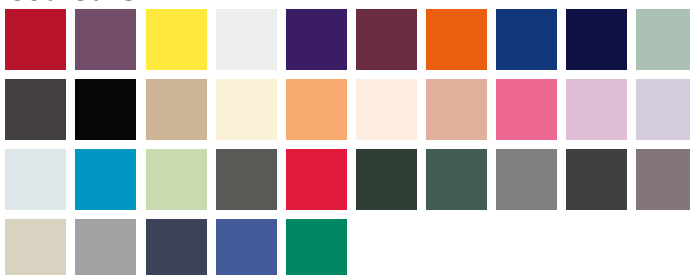
- Sweat à capuche classique
- Coupe et longueur confortable
- Coutures latérales
- Demi-lune intérieure à l'arrière
- Détails minimalistes
- B&C "No Label" pour un rebranding aisé

Attention*: 3XL only in Black Pure, Navy Blue, Heather Grey, Asphalt, Royal, Red & White



Tailles: XS, S, M, L, XL, 2XL, 3XL

Couleurs:



Red, Heather Purple, Solar Yellow, White, Radiant Purple, Wine, Pure Orange, royal, Navy Blue, Sage, Asphalt, Black Pure, Desert, Pale yellow, Melon Orange, Pale Pink, Nude, Pink Fizz, Candy Pink, Lavender, Pure Sky, Hawaiian Blue, Light Jade, Millennial Khaki, Heather Red, Forest green, Heather Dark Green, Heather Mid Grey, Heather Asphalt, Elephant Grey, Grey Fog, Heather grey, Heather Navy, Heather Royal Blue, Kelly green